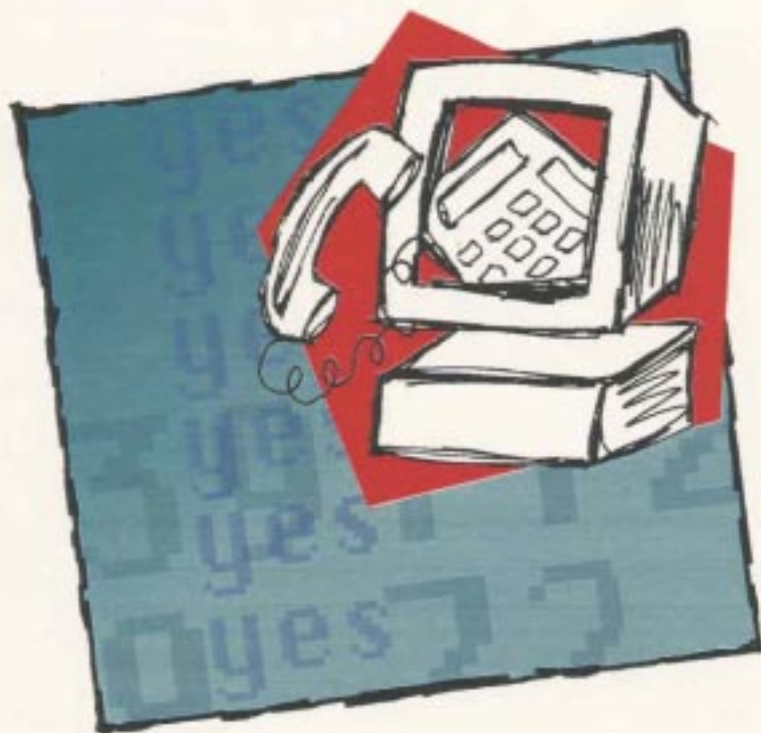


The
Analytical
Group Inc.



WINQUERY™

WHAT'S NEW

Computer-Aided Telephone Interviewing Software

What's New in WinQuery Version 1.2a

March 2000



Note: This guide is intended to serve as an update to the WinQuery 1.0 manual. It describes all new features added to WinQuery since version 1.0.

WinQuery version 1.2a has the following enhancements:

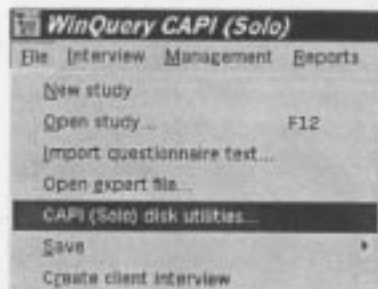
- ✓ **Expert version** (optional module) lets you enter code directly, thereby bypassing Windows dialog boxes and saving time.
- ✓ Inclusion of **CAPI (Solo) ability** formerly available separately in our ACS-Query SOLO and QueryXM SOLO software products.
- ✓ **New features in File|Create crosstabulation files:**
 - a) List conversion format for WinCross, Uncle, Microtab, Quantum and The Survey System crosstabulation software
 - b) Include uncoded alphanumeric open ends in WinCross using **File|Create crosstabulation files|WinCross**
 - c) Single-record, derotated ASCII output in WinCross **File|Create crosstabulation files|WinCross**
- ✓ Show answer options as selected/unselected in **Management|Build questionnaire|Answers**.
 - ☒ **Random start answers**
 - ☒ **Shuffle answers**
 - ☒ **Reverse answers**
 - ☒ **Alias codes**
 - ☒ **Associate open end**
 - ☒ **Options**
- ✓ Print/save **View quotas interactively** window in **Management|Quotas** menu.
- ✓ Combine batches based to sample elements, dispositions and multiple questions.
- ✓ Improved on-line **Help**.
- ✓ User ID in **Help|About WinQuery** window.

File|CAPI (Solo) disk utilities

Formerly a separate product, the **File|CAPI (Solo) disk utilities** option lets you create interviewing disks and files for electronic interviewing. This permits onsite and electronic (Web) interviewing, as well as interviewing by mail.

To access this option from the **File** menu, it is first necessary to designate the study as CAPI (computer-aided personal interviewing) using

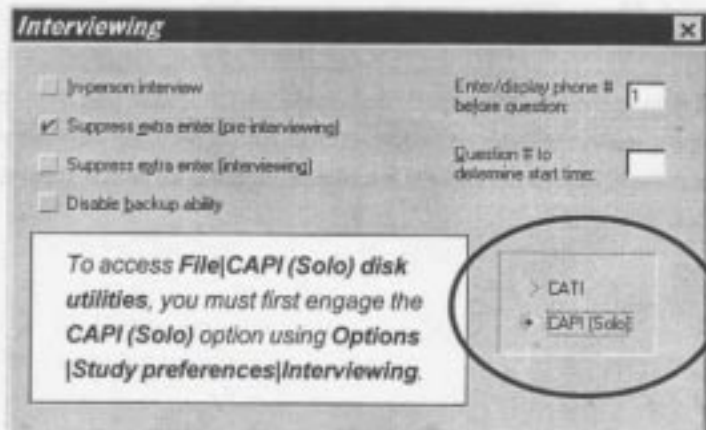
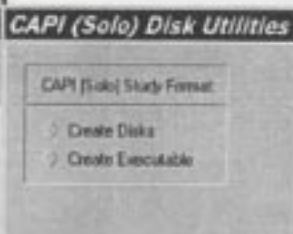
Options|Study preferences|Interviewing (see illustration below).



The resulting CAPI disks and files include everything necessary for data collection and reporting. Also, **CAPI (Solo) Disk utilities** lets you "refresh" (update) questionnaire and

logic files when changes must be made to existing files.

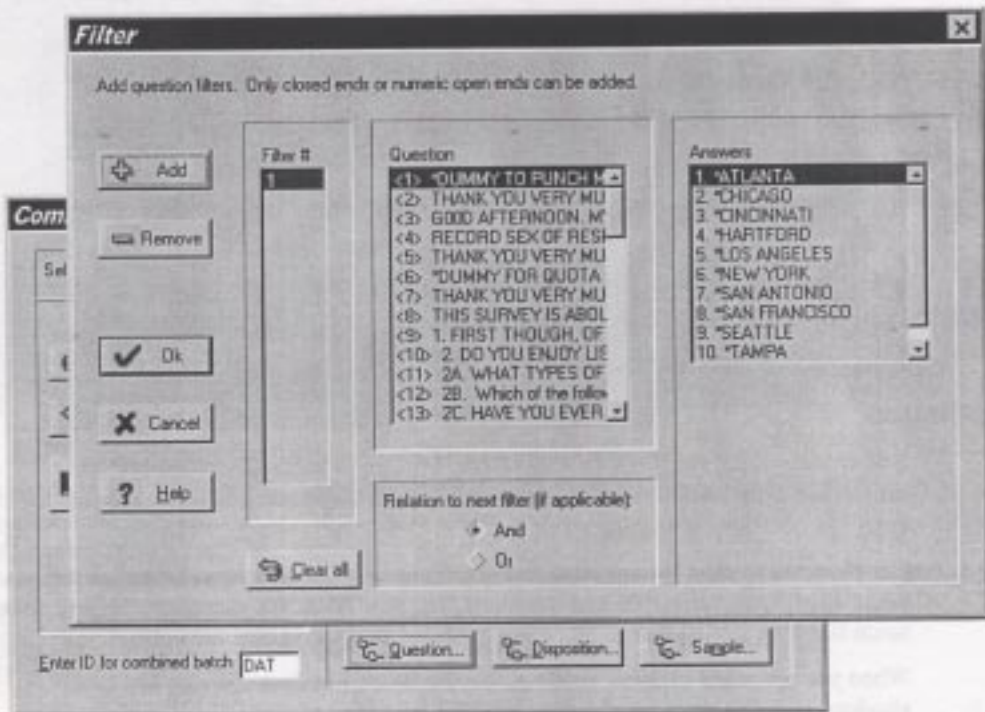
Please refer to WinQuery's on-line help for additional information.



Utilities|Batch management|Combine batches Multiple Questions



WinQuery 1.2a lets you **Combine batches** based on **Multiple questions**. To do so:



- ✓ Choose **Utilities|Batch management|Combine batches**.
- ✓ To create a question filter, select a question from the **Question** list box, then select answers from the adjacent **Answers** list box. Please refer to the tips on the previous page regarding multiple selections within a list box.
- ✓ Click **Add**.
- ✓ Repeat the process for each additional filter, relating each additional filter to the first by using the **And/Or** operators within the **Relation to next filter** field.
- ✓ Click **OK** when you are finished adding filters.